



Bluetooth Setup for eBeam System 3 Windows XP

These instructions will help you set up your Bluetooth-enabled eBeam System 3 on a computer with a Windows XP operating system.

Note: The Bluetooth-enabled eBeam System 3 is supported only on Windows XP Service Pack 2 or higher at this time, and requires that you have the latest eBeam software installed on your computer.

To check the Service Pack level you are working with, go to Start > Control Panel > System on your computer.

Before you begin, make sure you have an updated IOGEAR driver installed on your computer. Visit <http://www.iogear.com/support/dm/> to get the updated driver and setup instructions for your computer's operating system.

Note: If your computer has embedded Bluetooth already installed do NOT install the IOGEAR driver. Call 888-99-EBEAM to finish your Bluetooth setup.

- When the IOGEAR driver has been installed a red Bluetooth icon appears in the system tray of your computer (located near the lower right-hand of the screen), indicating no Bluetooth device is detected.



- Plug your eBeam receiver into a power outlet, and confirm that the light is glowing blue.
- Insert the IOGEAR Bluetooth adapter into an available USB port on your computer. The Bluetooth icon in your system tray turns white, indicating that your Bluetooth adapter is recognized.

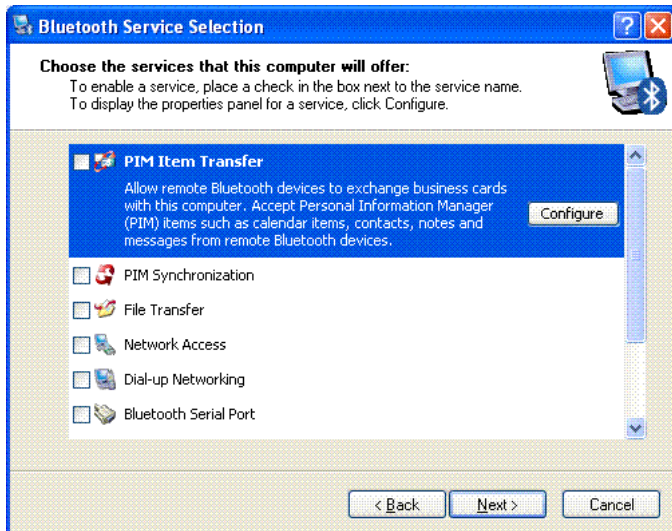


- If your computer is not recognizing the Bluetooth adapter, call 888-99-EBEAM to further diagnose the issue.

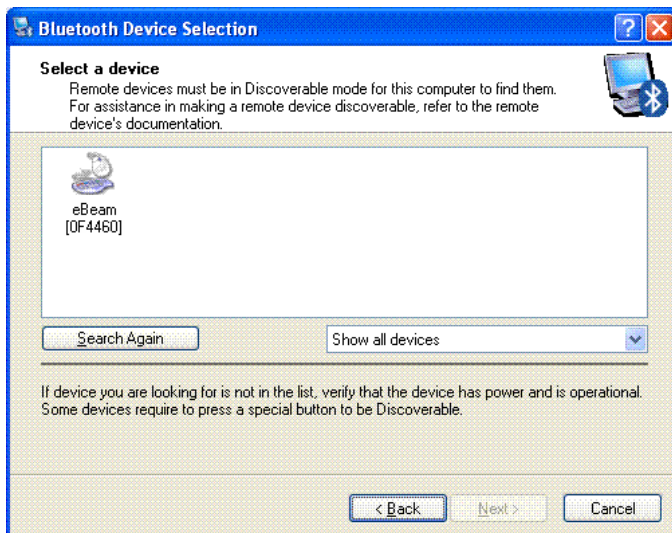
- Double-click the Bluetooth icon in your system tray and the Bluetooth Setup Wizard starts automatically. Leave all 3 boxes checked, and click **Next**.



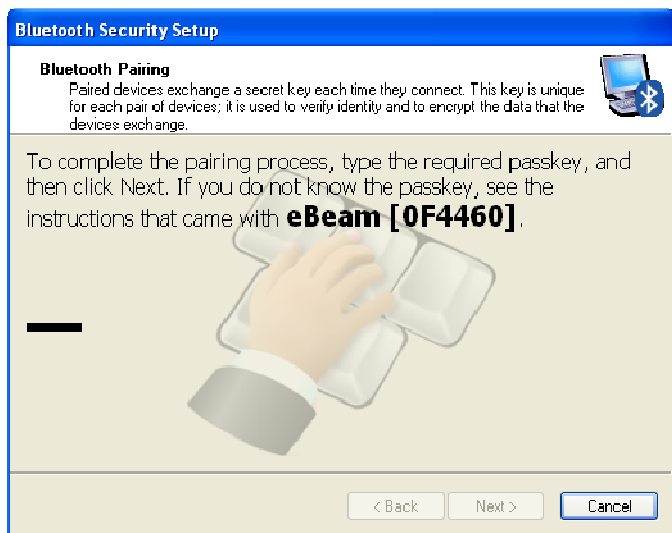
- A **General** dialog box appears allowing you to change the name of your computer and select your computer type. Click **Next** twice.
- The **Bluetooth Service Selection** dialog box allows you to choose what services you would like your computer to offer other computers. Uncheck all of the boxes, and click **Next** twice.



- Make sure the drop-down menu is set to "Show all devices". Your computer will detect your eBeam receiver. Select it and click **Next**.

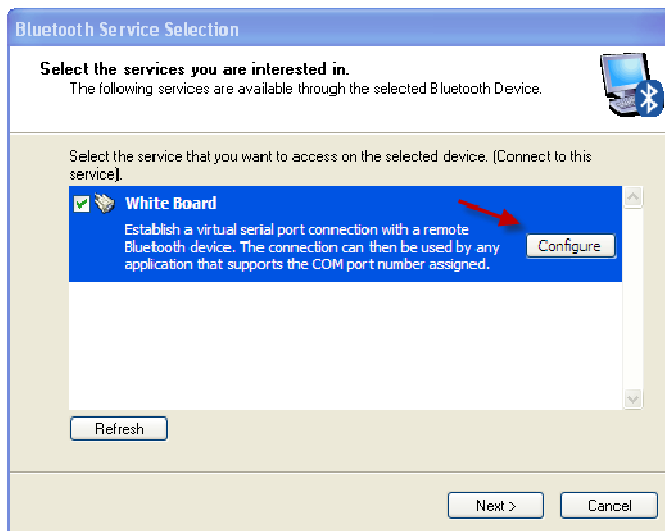


- Note: Your device will be called eBeam (XXXXXX), where (XXXXXX) is the predetermined number given to your specific eBeam receiver.
- Enter PIN code 1234 and click **Next**.

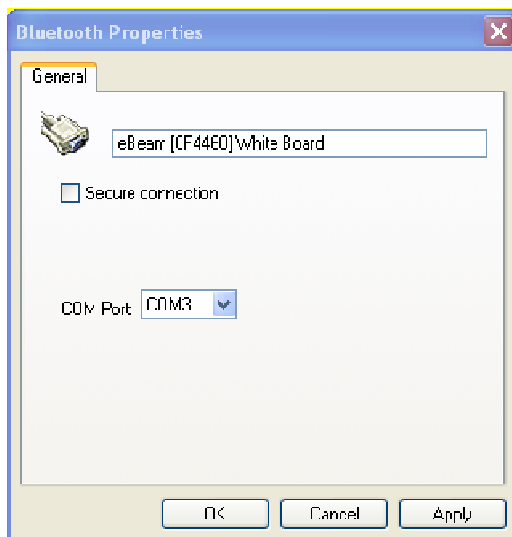


- Note: This passkey will be requested whenever you pair the eBeam receiver with another computer.

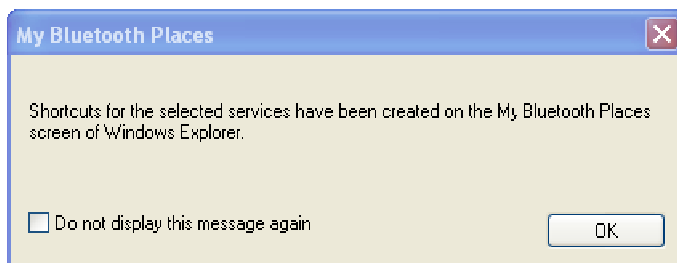
- Check the box next to "White Board", and select **Configure**.



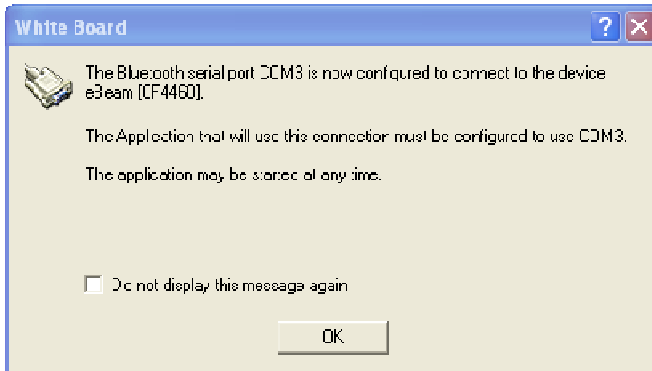
- Uncheck "Secure Connection", then click **OK**.



- Click **Next** in the **Bluetooth Service Selection** dialog box, then click **OK**.



- In the **Initial Bluetooth Configuration Wizard** click **Skip**. Then click **Finish**.
- A **My Bluetooth Places** window opens displaying all of your available Bluetooth devices. Double click on your eBeam receiver.
- Your Bluetooth is configured. Click **OK**.



- Verify that the glowing blue light on your eBeam receiver flashes four times. This indicates that your computer has made a connection with the receiver. The Bluetooth icon in your system tray will also turn blue.

