



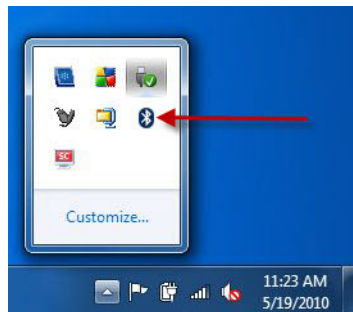
Bluetooth Setup for eBeam System 3 Windows 7

These instructions will help you set up your Bluetooth-enabled eBeam System 3 on a computer with a Windows 7 operating system.

Before you begin, make sure you have the latest eBeam software as well as an updated IOGEAR driver installed on your computer. Visit <http://www.iogear.com/support/dm/> to get the updated driver and setup instructions for your computer.

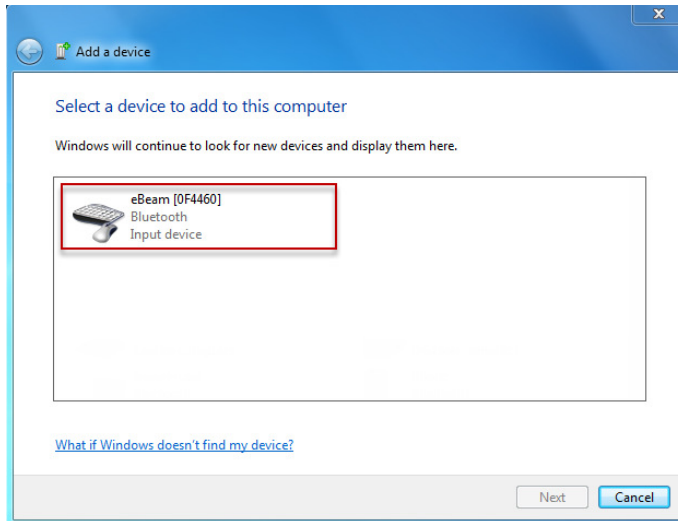
Note: If your computer has embedded Bluetooth already installed do NOT install the IOGEAR driver. Call 888-99-EBEAM to finish your Bluetooth setup.

- Plug your eBeam receiver into a power outlet, and confirm that the light is glowing blue.
- If your IOGEAR isn't already inserted into an available USB port on your computer, do so at this time. A Bluetooth icon will appear in the system tray of your computer (located near the lower right-hand of the screen), indicating your Bluetooth adapter is recognized.

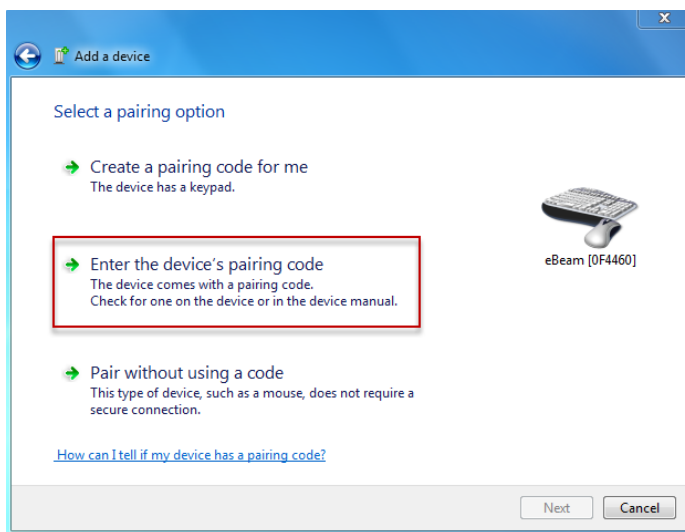


- If your computer is not recognizing the Bluetooth adapter, call 888-99-EBEAM to further diagnose the issue.
- Right-click on the Bluetooth icon, and select **Add a Device**.

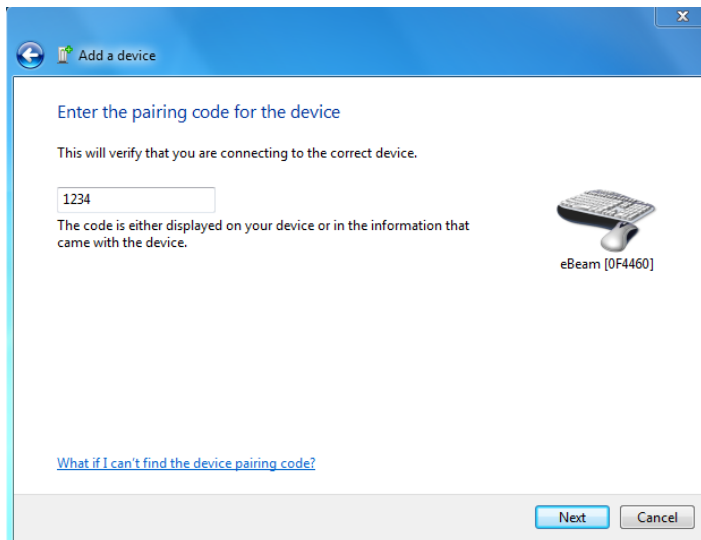
- A dialogue box will appear with all available devices. Highlight your Bluetooth-enabled eBeam device and click **Next**.



- Note: Your device will be called eBeam-“XXXXXX”, “where “XXXXXX” is the predetermined number given to your specific eBeam receiver.
- Select the button **Enter the device’s pairing code**.



- Enter the passkey “1234,” and click **Next**.



- Note: This passkey will be requested whenever you pair the eBeam receiver with another computer
- Verify that the glowing blue light on your eBeam receiver flashes four times. This indicates that your computer has made a connection with the receiver.
- A new dialogue box will appear on your computer screen confirming that your Bluetooth device has been added. Click **Close** to end the setup.